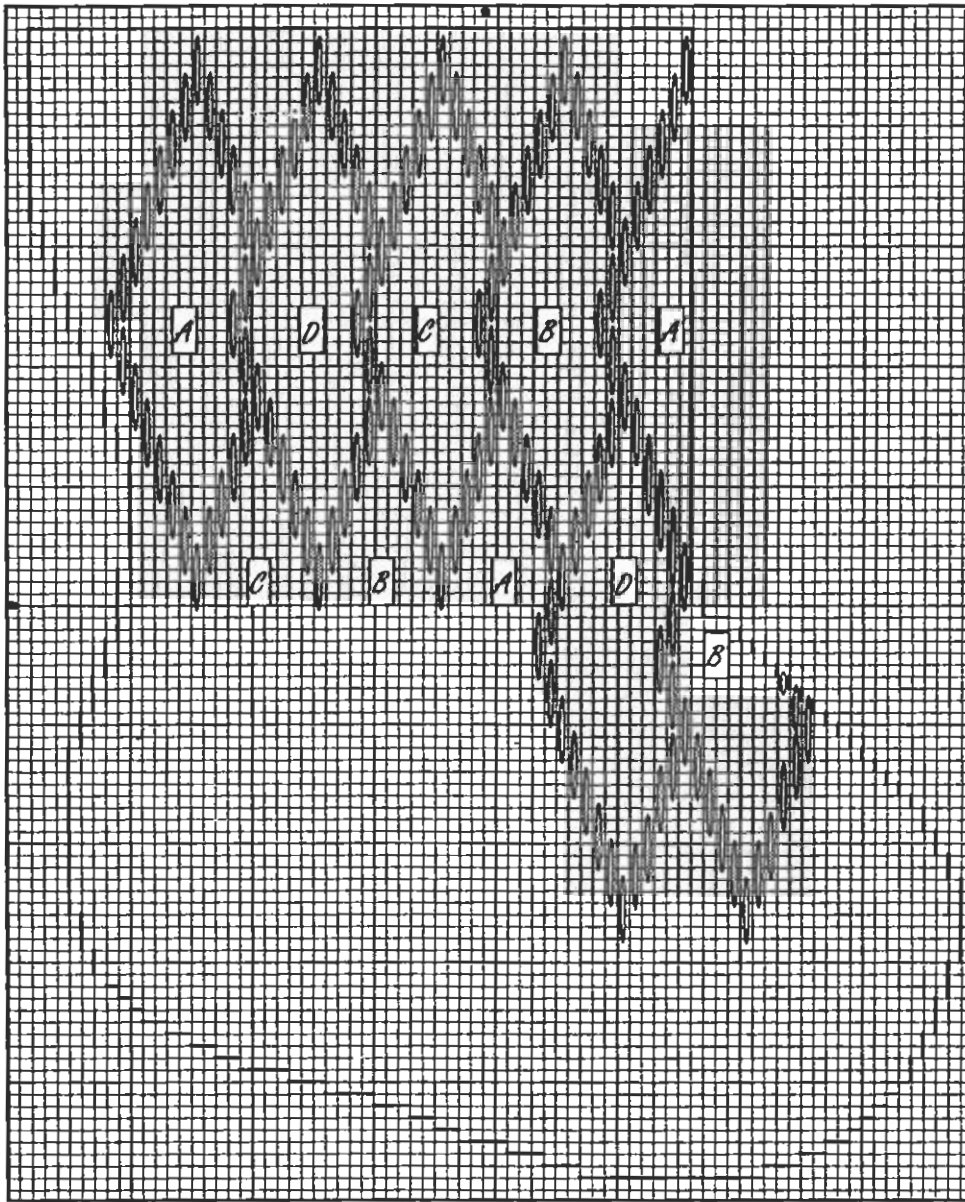






# Bargello Tile Xmas Sock

a free pattern from The Caron Collection



## Tips for working with Rachelette:

Rachelette is a tubular nylon thread (Rachel) with fine metallic threaded through it. Both threads tend to ravel easily, so care must be taken in stitching. Although one yard lengths are manageable, you may prefer to work with shorter lengths. Move the needle along the thread frequently. Smooth the entire length of thread after every 2 or 3 stitches to even out the metallic and the nylon. If either of the threads begins to fray, clip off that portion to prevent further fraying.

	A	B	C	D
	166	150	97	98
	74	132	102	94
	150	97	98	166
	132	102	94	74



Each line on grid represents one canvas thread. All stitches are vertical over 6 threads.

## Materials:

8x10" #18 canvas  
 #20 tapestry needle  
 Rachelette, 2 skeins each: A 178  
 Rachelette, 1 skein each: A 74, A 94, A 97  
 A 98, A 102, A 132, A 150, A 166

Our color sequence is just a suggestion. Please use imaginative combinations of your own choosing. You will need a total of 30 yards to complete the design.

## Directions:

With a fine line permanent pen, lightly trace outline of stocking on canvas, being sure that design is centered and that top and right vertical edges of pattern each follow a single canvas thread.

**Important:** Mount canvas on frame. Canvas should be kept taut at all times to prevent distortion caused by stitches.

Stitch entire gridwork with A 178. All stitches are placed vertically over 6 threads.

Fill in all remaining rows as in the enlarged diagram at right.